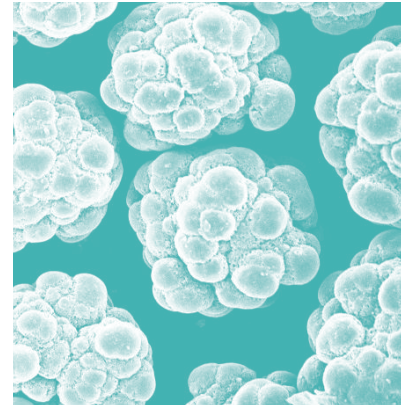


Ekonol® Case Study #2:



Coefficient of Friction vs. % Etonol® in PTFE

The graph shows the coefficient of friction data corresponding to the wear test. This graph illustrates that there is relatively little difference in the coefficient of friction between PTFE and the

combination of Etonol® and PTFE. Pure Etonol® Polyester has a coefficient of friction of 0.37 under these conditions.

Coefficient of Friction vs % Etonol® in PTFE

2 hrs. Test at 110 psi (0.76 MPa), 90 fpm (27.4m/min)
on a LFW-1 tester.

