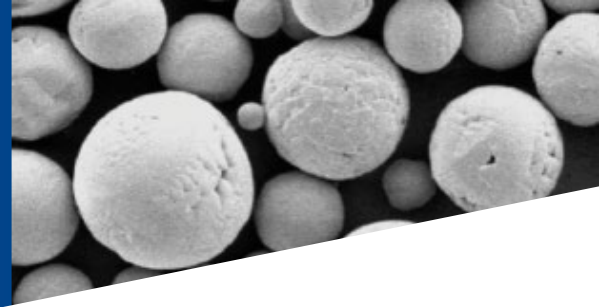


Thermal Spray Powders Technical Datasheet



Saint-Gobain Spinel (Magnesium Aluminate)

POWDERS CHARACTERISTICS

Product	Nominal Size	Color	Morphology
#171	20-75 micron	White	Hollow sphere
#172	10-63 micron	White	Spherical agglomerate

TYPICAL CHEMISTRY

Product	Al ₂ O ₃	MgO	CaO	ZrO ₂	Fe ₂ O ₃	SiO ₂	Other
#171, #172	73%	26%	0.20%	0.20%	0.15%	0.10%	0.15%

KEY PROPERTIES

Spinel materials produces coatings with good dielectric strength, good wear resistance, high thermal shock resistance, and resistance to molten metals (zinc, etc). Spinel exhibits very good phase stability up to 1400°C.

Saint-Gobain Spinel powders are spherical which enables more uniform build up rates without clogging or pulsing of the feed lines. In addition, the hollow particle morphology of Saint-Gobain #171 leads to more complete melting and higher deposit efficiencies.

TYPICAL APPLICATIONS

Internal Combustion Engine Oxygen Sensors, Coating of Foundry Molds, Ladles and Furnace Parts, High Temperature Applications

Status	Customer Specifications
Approved	Other Specs: Delphi, Bosch
Meet spec	Allison Gas Turbine: EMS 56758