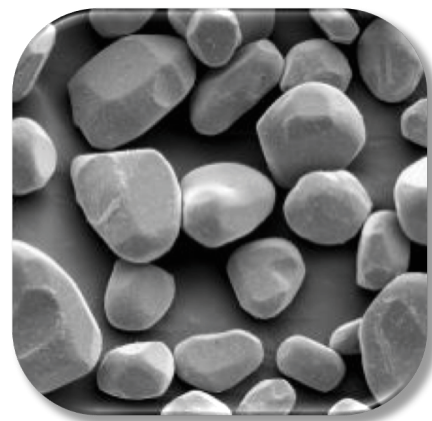


Thermal Spray Powders Technical Datasheet



Saint-Gobain Chromium Oxide

POWDER CHARACTERISTICS

| Product | Nominal Size | Color | Morphology |
|---------------------|--------------|-------|-------------------|
| #2022 | 5-15 micron | Black | Irregular/rounded |
| #2021 | 10-30 micron | Black | Irregular/rounded |
| #2020, #2026, #2525 | 15-45 micron | Black | Irregular/rounded |
| #2023 | 15-63 micron | Black | Irregular/rounded |

TYPICAL CHEMISTRY

| Cr ₂ O ₃ | Al ₂ O ₃ | Fe ₂ O ₃ | TiO ₂ | SiO ₂ | Cr |
|--------------------------------|--------------------------------|--------------------------------|------------------|------------------|-------|
| 99.6% | 0.05% | 0.20% | 0.03% | 0.06% | 0.02% |

PROPERTIES AND APPLICATIONS

Saint-Gobain #2000 series is a fused chromium oxide powder that is rounded for superior flow characteristics. The rounded shape combined with tightly controlled particle size delivers a uniform stream of powder to the heat source. The resulting coatings have reliable build up rates with high deposit efficiencies and low porosity. Strict control of particle size and chemistry also lead to coatings with high density and hardness.

The coatings are used for a variety of severe wear and corrosion resistance applications. Some examples include pumps parts, chemical industry components, and paper rolls. Since the coatings contain a negligible amount of chromium metal, they are ideal for laser engraved anilox printing rolls. Choosing a coarser particle size allows for building thicker coatings while finer particle sizes are ideal for finer finishes.

CoatingSolutions@Saint-Gobain.com | www.coatingsolutions.saint-gobain.com

© Saint-Gobain Specialty Grains and Powders, January 2020

SAINT-GOBAIN COATING SOLUTIONS



The information contained in this document is believed to be accurate and reliable but is presented without guarantee or warranty on the part of Saint-Gobain Ceramics and Plastics Inc. Nothing herein should be interpreted as an authorization or inducement to practice any patented invention without a license.