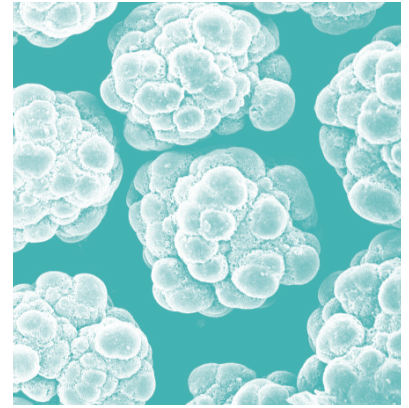


Ekonol[®] Case Study #4:



Limiting PV for 25% Ekonol[®]/PTFE

The limiting PV data for 25% Ekonol[®] in PTFE indicated a limiting PV of 15,000 at 10 fpm (0.0508 m/s) (cold flow occurred), up to 18,000 at 100 fpm 0.508 m/s and 12,000 at 1,000 fpm (5.08 m/s)

(thermal runaway occurred). It can be noted the material has a limiting PV curve very similar to that of 25% carbon/graphite in PTFE.

