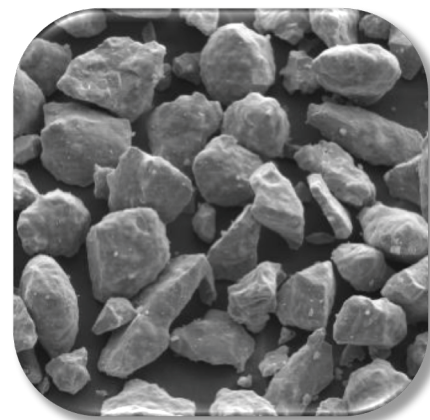


Thermal Spray Powders Technical Datasheet



Saint-Gobain Chromium Oxide with Silica-Titania

POWDER CHARACTERISTICS

Product	Nominal Size	Color	Morphology
#340	25-95 micron	Black	Irregular
#341	20-75micron	Black	Irregular

TYPICAL CHEMISTRY

Cr ₂ O ₃	SiO ₂	TiO ₂	Fe ₂ O ₃	Na ₂ O	Al ₂ O ₃	Organics	Free Cr
90.5%	4%	3%	0.25%	0.15%	0.08%	2%	0.02%

PROPERTIES AND APPLICATIONS

Saint-Gobain Chromium Oxide with Silica and Titania starts as a sintered and crushed black powder with an irregular shape. The base grain is then mechanically clad with additives designed to improve wear and impact resistance. The incorporation of titania and silica leads to increases in deposit efficiency while improving the finishing characteristics as compared to pure chromium oxides. The additives also increase wear resistance by helping to anchor the chromium oxide particles in the coating and reducing grain pull out in service.

Saint-Gobain Chromium Oxide with Silica and Titania is used for tough wear and corrosion resistance applications in pumps, shafts, seals, and rolls. The larger particle size powder is ideal for repair work where thicker coatings are required up to 0.1 inches (2.5 mm). Finer particle sizes are ideal for repair work where fine finishes are required.